



Education of patients in regular self-examination of their breasts cannot be overemphasised. Furthermore, doctors should be strongly encouraged to include an examination of the breasts as part of a general medical examination.

1. Kuten A, Cohen Y, Kerner V. Malignant melanoma of the nipple with auto-amputation of the breast. *Harefuah* 1976; 90: 321-322.
2. Mintz U, Keinan Z. Mammary auto-amputation in inoperable carcinoma of the female breast. *Harefuah* 1975; 88: 531-532.
3. Jaffer S, Bleiweiss J. Intraductal papilloma with 'comedo-like' necrosis, a diagnostic pitfall. *Ann Diag Path* 2004; 8: 276-279.
4. Moifar F, Mannion C, Man Y, *et al.* Mammary 'comedo' DCIS: apoptosis, oncosis and necrosis: an electron microscopic examination of 8 cases. *Ultrastruct Pathol* 2000; 24: 135-144.

CLINICAL IMAGES

Progressive multifocal leucoencephalopathy – a case report

Mala Modi

Progressive multifocal leucoencephalopathy (PML) is a demyelinating disease caused by the human neurotropic JC (John Cunningham) virus, a polyomavirus.^{1,2}

Following on the worldwide HIV/AIDS pandemic there has been a dramatic increase in the incidence of PML. However, cases of PML, an AIDS-defining illness, have rarely been reported from Africa, an area where HIV-1 clade C infection predominates.³⁻⁵

Clinical and imaging details

A 27-year-old woman presented to Chris Hani Baragwanath Hospital, Johannesburg, with new-onset seizures. She was heterosexual, did not abuse intravenous drugs, and was retroviral therapy-naïve. On examination in the medical ward she was found to be encephalopathic and pregnant. Further investigations revealed that she was HIV-positive with a very low CD4+ count of 7 cells/ μ l, and a viral load greater than 750 000 copies/ml. She was referred for imaging, and PML was diagnosed on the basis of computed tomography (CT) and magnetic resonance imaging (MRI) appearances.

Dr Modi is a senior radiologist and senior lecturer in the Department of Radiology, Chris Hani Baragwanath Hospital, Johannesburg. She is author of numerous papers in national and international peer-reviewed journals and is assistant editor of the South African Journal of Radiology.

Corresponding author: M Modi (Mala.Modi@wits.ac.za)



Fig. 1. Axial CT scan of the brain showing deep white-matter hypodensity involving predominantly the right parieto-occipital lobes. There is no mass effect.

263

The lesions on CT imaging were typical; they were scalloped in appearance, involved the white matter of the frontal, parietal

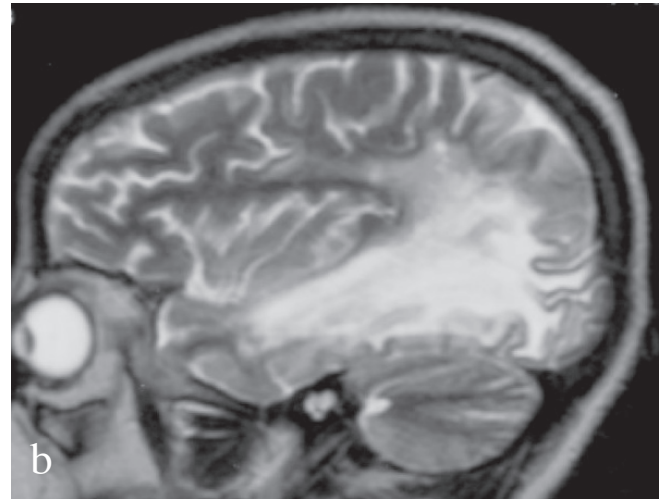
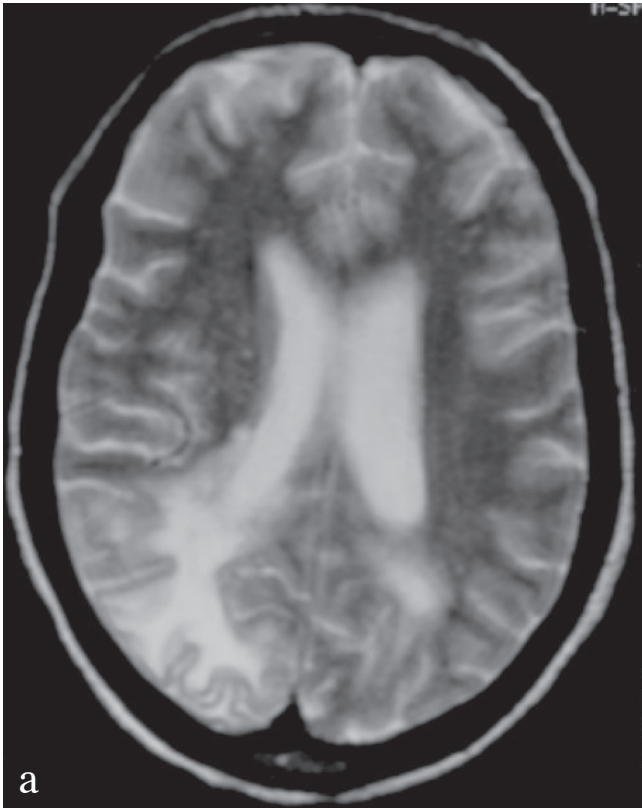


Fig. 2, a and b. T2 axial and sagittal MR images demonstrating extensive white-matter hyperintensities involving the frontal, parieto-occipital, and temporal lobes. There is background cerebral atrophy typical of advanced retroviral disease.

and occipital lobes, were hypodense, had no mass effect, and were non-enhancing (Fig. 1). On MRI the lesions were hypointense on T1 and hyperintense on T2-weighted MRI scans (Fig. 2, a and b).

The very low CD4+ count of 7 contributed to the diagnosis of PML. The diagnosis was confirmed on polymerase chain reaction (PCR) identification of the JC virus.

The patient died in hospital within a few days, and the diagnosis of PML was confirmed at autopsy.

Discussion

This is a rare case of autopsy-proven PML from a clade C HIV-1 infected area.⁶ It is pertinent to highlight this demyelinating opportunistic viral infection as access to antiretroviral therapy is currently improving, and the immune

reconstitution inflammatory syndrome (IRIS) that occasionally results following the initiation of highly active antiretroviral therapy (HAART) may in rare instances induce a paradoxical clinical deterioration in patients suffering from PML.⁷ It has been documented that HAART-induced paradoxical aggravation of AIDS-related PML due to IRIS is reversible in most cases with the use of prolonged steroid therapy.^{7,8}

Imaging can be particularly helpful when managing patients with PML and IRIS. PML lesions in patients not on HAART generally do not enhance, while in patients with IRIS contrast enhancement of the lesions may be seen.⁷

It therefore behoves us to be more vigilant when managing our patients with PML on HAART, as the early diagnosis and timely management of IRIS is critical.⁸

1. Del Valle L, Pina-Oviedo S. HIV disorders of the brain: pathology and pathogenesis. *Front Biosci* 2006; 11: 718-732.
2. Berger JR, Levy RM. *AIDS and the Nervous System*. 2nd ed. Philadelphia: Lippincott-Raven, 1997.
3. Berger JR, Houff S. Progressive multifocal leukoencephalopathy: lessons from AIDS and Natalizumab. *Neural Res* 2006; 28: 299-305.
4. Shankar SK, Satishchandra P, Mahadevan A, et al. Low prevalence of progressive multifocal leukoencephalopathy in India and Africa: is there a biological explanation? *J Neurovirol* 2003; 9: suppl 1, 59-67.
5. Puren AJ. The HIV-1 epidemic in South Africa. *Oral Dis* 2002; 8: suppl 2, 27-31.
6. Modi G, Hari K, Modi M, Mochan A. The frequency and profile of neurology in black South African HIV infected (clade C) patients – a hospital-based prospective audit. *J Neurol Sci* 2007; 254(1-2): 60-64.
7. Gray F, Bazille C, Adle-Biassette H, Mikol J, Moulignier A, Scaravilli F. Central nervous system immune reconstitution disease in acquired immunodeficiency syndrome patients receiving highly active antiretroviral treatment. *J Neurovirol* 2005; 11: suppl 3, 16-22.
8. Nuttall JJ, Wilmshurst JM, Ndong AP, et al. Progressive multifocal leukoencephalopathy after initiation of highly active antiretroviral therapy in a child with advanced human immunodeficiency virus infection: a case of immune reconstitution inflammatory syndrome. *Pediatr Infect Dis J* 2004; 23: 683-685.